

DC-80

Diagnostic Ultrasound System

Insight, Intelligence, and more



129626, Москва, проспект Мира,
дом 102, корпус 1, этаж 6, к. 6

Телефон: 8 (800) 555-73-87

Email: info@medeq.ru

Web: www.medeq.ru



Overview

The best patient care is your ultimate goal. To achieve this requires confident diagnosis even with daily increases in patient throughput. Built on the foundation of Mindray's continuous efforts over the years and the inheritance from premium technology, the DC-80 is designed to help you manage your daily output with excellent insights, intelligence and a whole lot more, no matter what type patients and clinical challenges you will face.

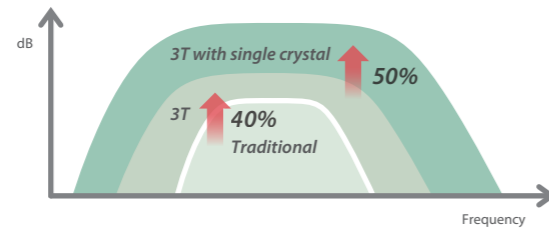


Insight through premier transducers

Just place the transducer, and realize the images that you need. With continuous efforts to improve technology, Mindray ultrasound has been recognized worldwide for proven performance. Based on transducers with cutting-edge technology, the DC-80 can dramatically improve imaging capability across a wide range of applications.

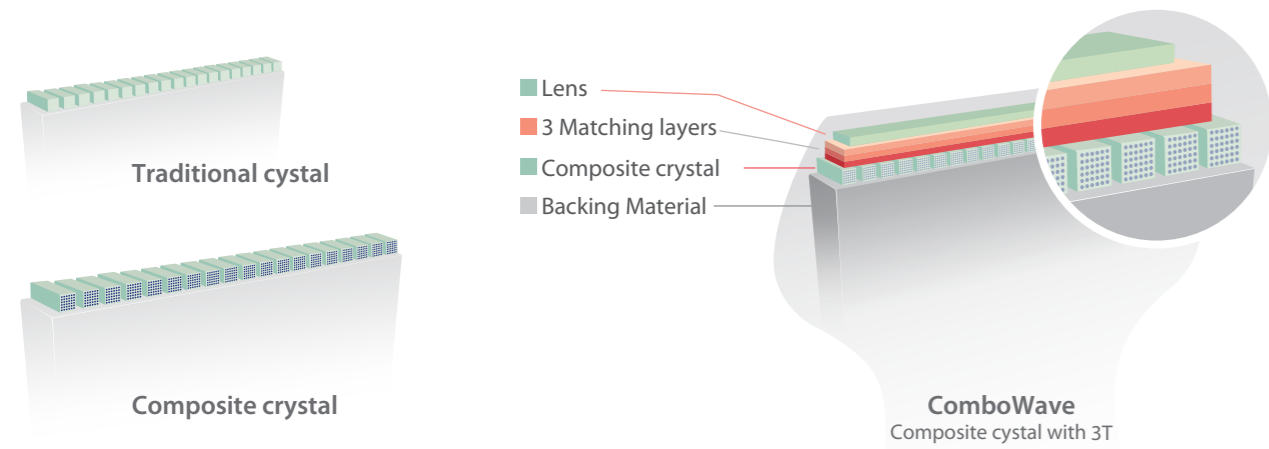
Single crystal transducers with 3T technology

Based on single crystal with Mindray unique 3T technology (Triple-matching layers, Total-cut design, Thermal control), the SC5-1E and SP5-1E provide a wider bandwidth to simultaneously offer better penetration and higher resolution, resulting in an optimum scanning solution for technically difficult patients.



ComboWave transducers

Compared with traditional transducers, ComboWave transducers utilize a new type of composite piezoelectric material to dramatically optimize the acoustic spectrum and reduce acoustic impedance. Further integrated with Mindray's unique 3T technology, the ComboWave transducers L12-3E, L14-5WE and L9-3E allow you to experience outstanding performance with extreme image resolution and uniformity in applications such as thyroid, breast, vascular, and more.

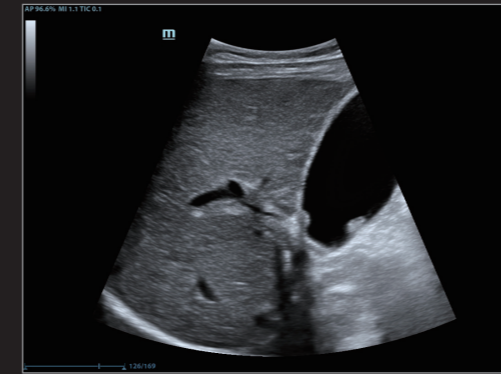


Ultra-light volume transducer with superior performance

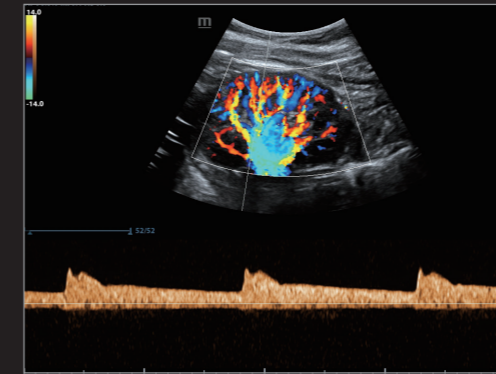
The ultra-light and high-density volume transducer D8-2E offers superior obstetric imaging performance across 2D, color, and 3D/4D for more diagnostic confidence and patient care.

Dedicated interventional transducer

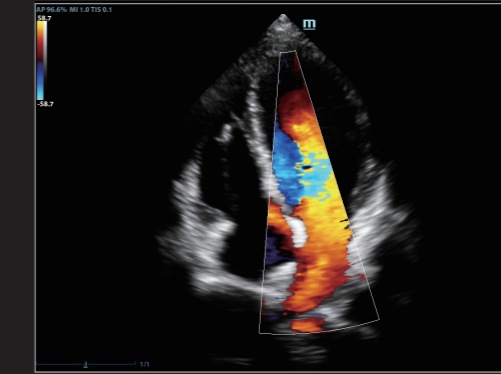
C6-2GE is a dedicated interventional transducer with outstanding 2D and CEUS image performance, optimum hand-fit design, minimum blind biopsy area, and professional needle-guided bracket with a coating of nanometer material for easy disinfection.



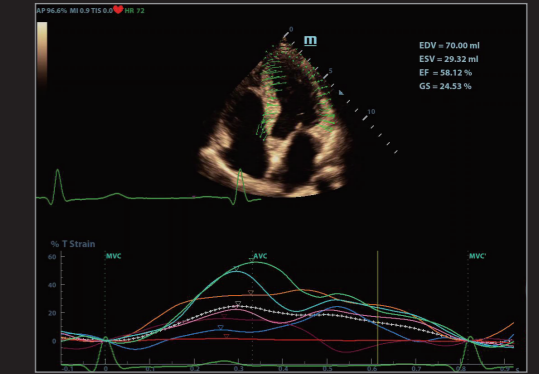
Gallbladder Polyp



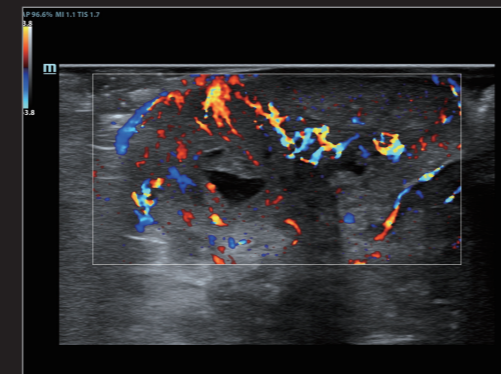
Duplex Kidney



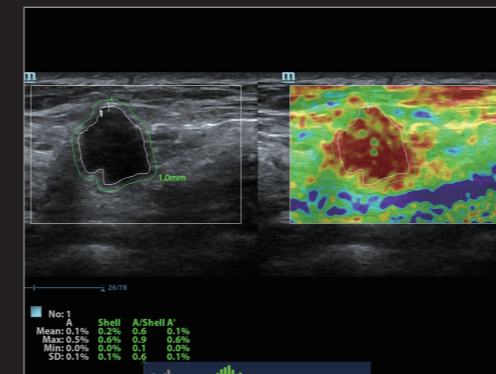
Four Chamber View



TT QA



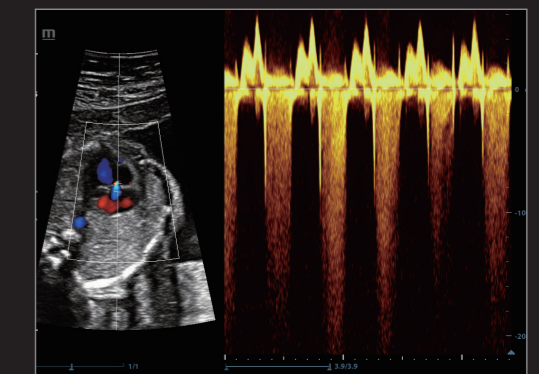
HR Flow of Breast Tumor



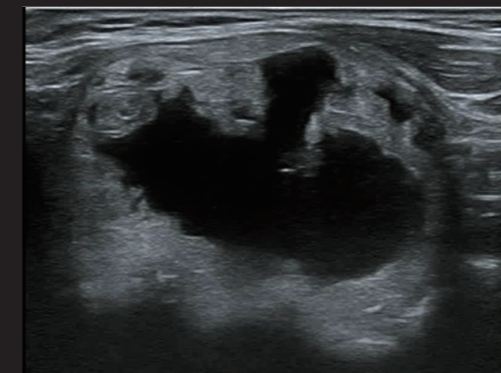
Shell Analysis of Breast Mass



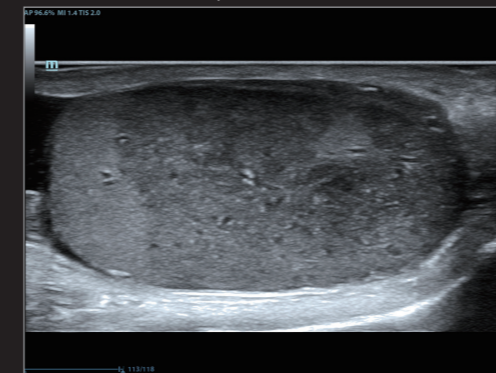
3D Fetal Face iLive



Fetal Heart Tricuspid Regurgitation



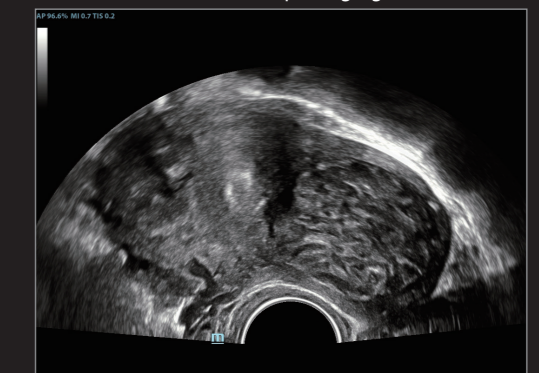
Thyroid Nodule



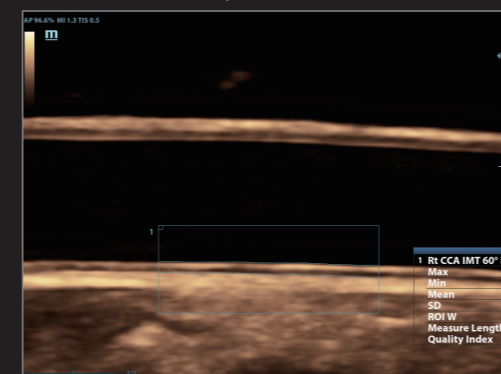
Testicle Infarction



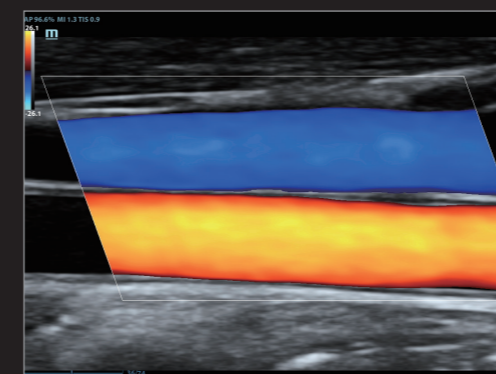
Fetal Hydronephrosis



Fibroid



Auto IMT of CCA



CCA and Jugular Vein

Insight
proven by exceptional image clarity



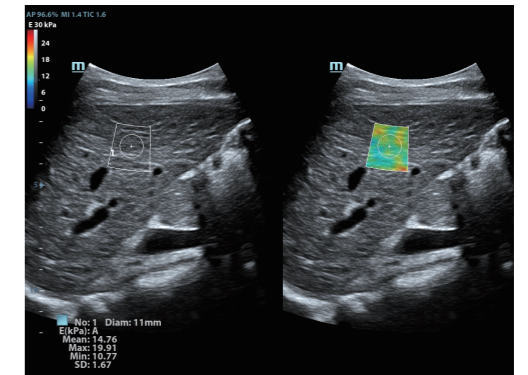
Insight

for addressing diagnostic requirements

As an insightful solution, the DC-80 delivers outstanding performance with the most advanced capabilities for addressing your diagnostic requirements across a wide range of applications. This includes a complete elastography solution with best in class shear wave and strain elastography for tissue stiffness assessment, UWN⁺ CEUS and quantitative analysis tools for vascular perfusion analysis, Depth VR for vivid 3D/4D with depth perception, tissue tracking for regional myocardial analysis, and more.

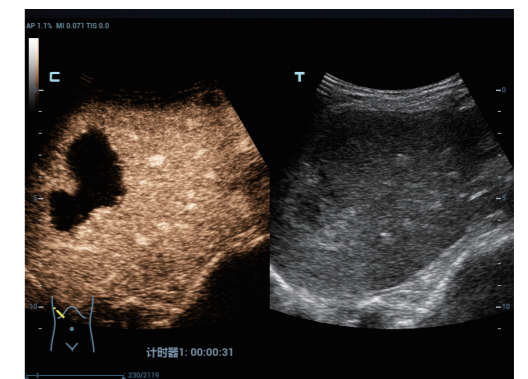
Complete Elastography Solution

The DC-80 delivers a complete elastography solution with best in class shear wave and strain technology. **Sound Touch Elastography (STE*)** with reliability map allows clinicians to get real-time 2D elastography and Young's modulus quantification for liver with high accuracy and reproducibility. **Sound Touch Quantification (STQ*)** with unique "E Avg" also enables real time and easy tissue stiffness quantification for hepatic fibrosis assessment with high reliability and stability. **Natural Touch Elastography** with a unique shell for tumor infiltration analysis provides high stiffness sensitivity in applications such as thyroid, breast, and GYN.



UWN⁺ CEUS

UWN⁺ (Ultra-Wideband Non-Linear Plus) CEUS enables the DC-80 to detect and utilize both 2nd harmonic and non-linear fundamental signals, generating images with significant enhancements, resulting in more sensitivity even with the minor signal, and longer agent duration with lower MI. The UWN⁺ CEUS is available for both superficial tissue and liver applications.



3D with Depth VR

Aided by an innovative new algorithm with depth information, 3D image with Depth VR provides an interactive lighting effect that generates more vivid rendering of images with depth perception.



* Please check the availability of this option in your region with Mindray representatives.

Intelligence

leading the clinical trend

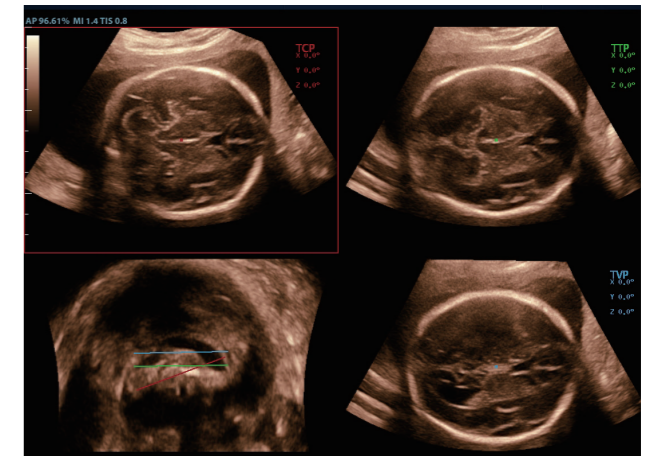
Think what you want, and just do it.

The customer voice is extremely strong in improving scanning efficiency, consistency, and accuracy. Now the DC-80 just thinks from your viewpoint and delivers leading intelligence from acquisition to calculation, and from image optimization to exam protocol, with technology such as Smart Planes CNS, Smart FLC, Smart OB/NT, Smart Track, Auto EF, iTouch, and iWorks.



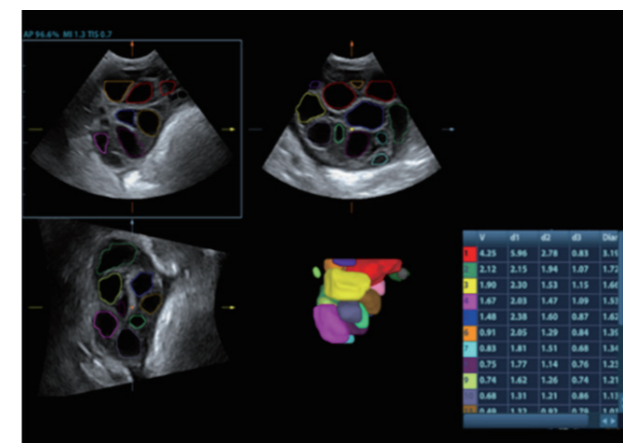
Smart Planes CNS

Migrating Mindray's exclusive pioneering technology from the premium product, the DC-80 provides fully automatic and accurate detection of the most significant planes and frequently-used measurements of fetal CNS, leading to an intelligent diagnosis, improved throughput, and reduced user dependency. Smart Planes CNS is a user-friendly tool that greatly improves scanning efficiency through increased accuracy coupled with automated operation. With a simple button-click on a 3D fetal brain volume image, the standard CNS scanning planes (MSP, TCP, TTP and TVP) and a range of related anatomical measurements (BPD, HC, OFD, TCD, CM and LVW) are obtained immediately.



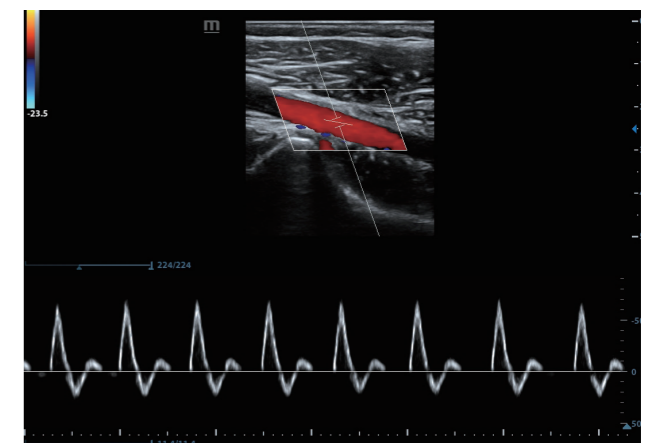
Smart FLC

Smart FLC automatically detects the number of follicles and calculates each volume from a 3D ovarian volume image, assuring accurate assessment of follicles, especially with IVF exams.



Smart Track

Smart Track is Mindray's unique ultrasound feature to reduce repetitive, time-consuming scanning steps in vascular exams. By intelligent tracking of vessels, it can automatically adjust the ROI position and steering angle of Color/Power, and PW sample volume position, size and correction angle during real-time scanning.



Innovation

refining your user experience

Inspired innovation is driven by clinical needs. The DC-80 is focused on what matters to you and refines your user experience with better ergonomics, easier scanning, and flexible management, even beyond your expectations.



Unique dual-wing floating arm with 21.5" monitor

Mindray's exclusive dual-wing delivers an unlimited-angle floating design for extremely flexible monitor positioning, adapting to clinical needs. The folded dual-wing also minimizes system body height for easy transportation.

12.1" Tilting multi-gesture touch screen

Powerful gesture-based operation opens up a new trend in cart-based ultrasound with an agile, smart, and intuitive user experience beyond your expectations.

Interactive ultrasound APP --- MedTouch

MedTouch is a one-stop solution for a smarter way to control ultrasound devices, and access patient data and inbuilt tutorial software via your IOS/Android operated smart devices.



More

to understand you, think with you,
and design for you

Insight ensures diagnostic confidence;
Intelligence empowers efficiency, consistency and accuracy;
Innovation uncovers a brand-new user experience;
As the most reliable and hard-working ultrasound solution, the DC-80 will continually evolve to offer all the above and a lot more ...

As time goes by, patient care goes deeper!
As time flies, your clinical requirements evolve!
As Mindray, we care about you and keep listening to you to understand you,
think with you, and design for you!